



AP-IF INLINE FLUID MONITOR INDICATOR AND CONTROL SYSTEM

McNab, Incorporated

DESCRIPTION

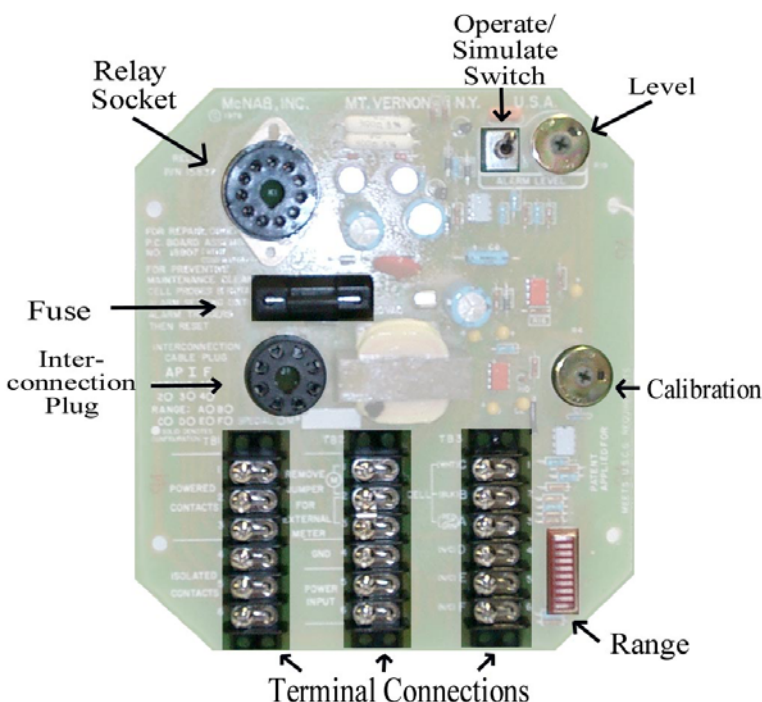
The AP-IF Inline Fluid Monitor Indicator and Control System is used to monitor the purity of fluids by means of conductance measurements. It may be installed with fluid tanks or piping systems. The unit consists of an enclosed case with hinged front panel and a conductivity cell. The panel contains a meter, a power switch, and POWER and ALARM indicators. Electronic circuits are located on a printed circuit board assembly mounted inside the case. An interconnect cable is provided for wiring between the panel and printed circuit board. External connections (power, cell, powered contacts, and isolated contacts) are made at the three terminal strips on the printed circuit board. Connections to an optional external meter or recorder may also be made.

Conductance values reflecting fluid purity level are indicated on the panel meter. (See Technical Data for applicable meter scale range.) An adjustable limit of allowable conductance (impurity) is included in the electronic monitor circuit (alarm set point). If the fluid impurity level rises above this preset limit, the controller relay in the monitor circuit is energized causing the ALARM indicator on the panel to light. The Operate/Simulate switch and Level control on the printed circuit board are used to adjust the alarm set point.



SPECIAL FEATURES

- NEMA 12 (Indoor)
- 117/220 VAC
- 48/62 Hz
- Stainless steel enclosure
- Automatic self zero
- Linear signal
- Wall mounting
- Hinged door
- Internal adjustable controls
- Display reading setpoint
- 0-1 mA output



20 North MacQuesten Parkway ♦ Mount Vernon, New York ♦ 10504 U.S.A.
Phone: (914) 699-1616 ♦ Fax: (914) 699-1671
info@themcnab.com ♦ www.themcnab.com



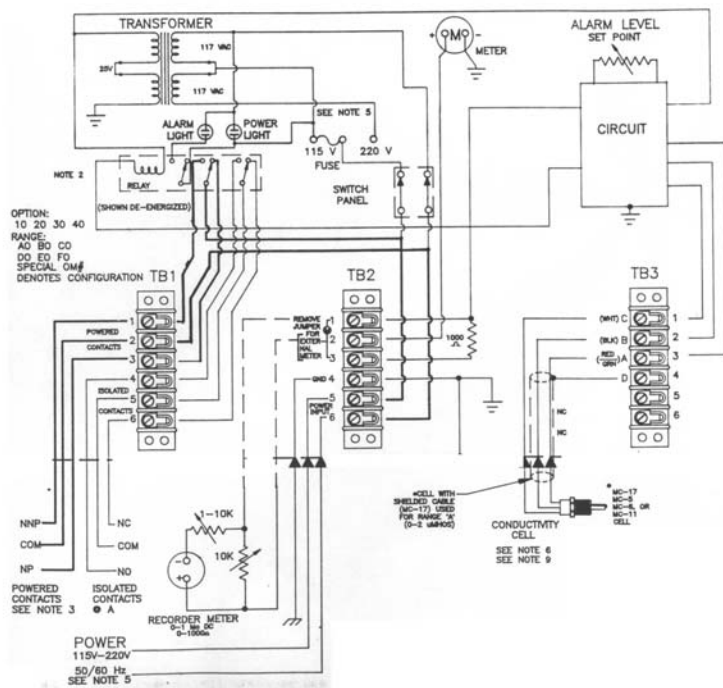
AP-IF INLINE FLUID MONITOR INDICATOR AND CONTROL SYSTEM

McNab, Incorporated

TECHNICAL DATA

Units of Measure	Micromhos, microsiemens
Range	0-2, 20, 200, 2,000, 20,000, 200,000
Input Signal	Balanced
Mode	Linear
Mounting Dimensions	8 1/4" H x 7 1/8" W x 5 5/8" D
Housing NEMA/Material	Stainless Steel NEMA 12
Meter/Type	Analog
Output	Switched STDT @ 5 amps
Power Requirements	117 or 230 @ 50-60 hz
Weight	6 lbs.
Cell/Sensor	Provided with quotation
Temperature: Normal/Max. (typ)	Provided with quotation
Pressure: Normal/Max. (typ)	100 psi, 150 psi
Connection Size	3/4, 1", or linear valve
Wetted Material	Provided with quotation
Cable Length (typ)	6 feet
Instruction Book	511
Accessories	See Accessory List A01-67A

CONNECTIONS



TYPICAL CELL



CELL 3/4"

20 North MacQuesten Parkway ♦ Mount Vernon, New York ♦ 10504 U.S.A.
Phone: (914) 699-1616 ♦ Fax: (914) 699-1671
info@themcnab.com ♦ www.themcnab.com